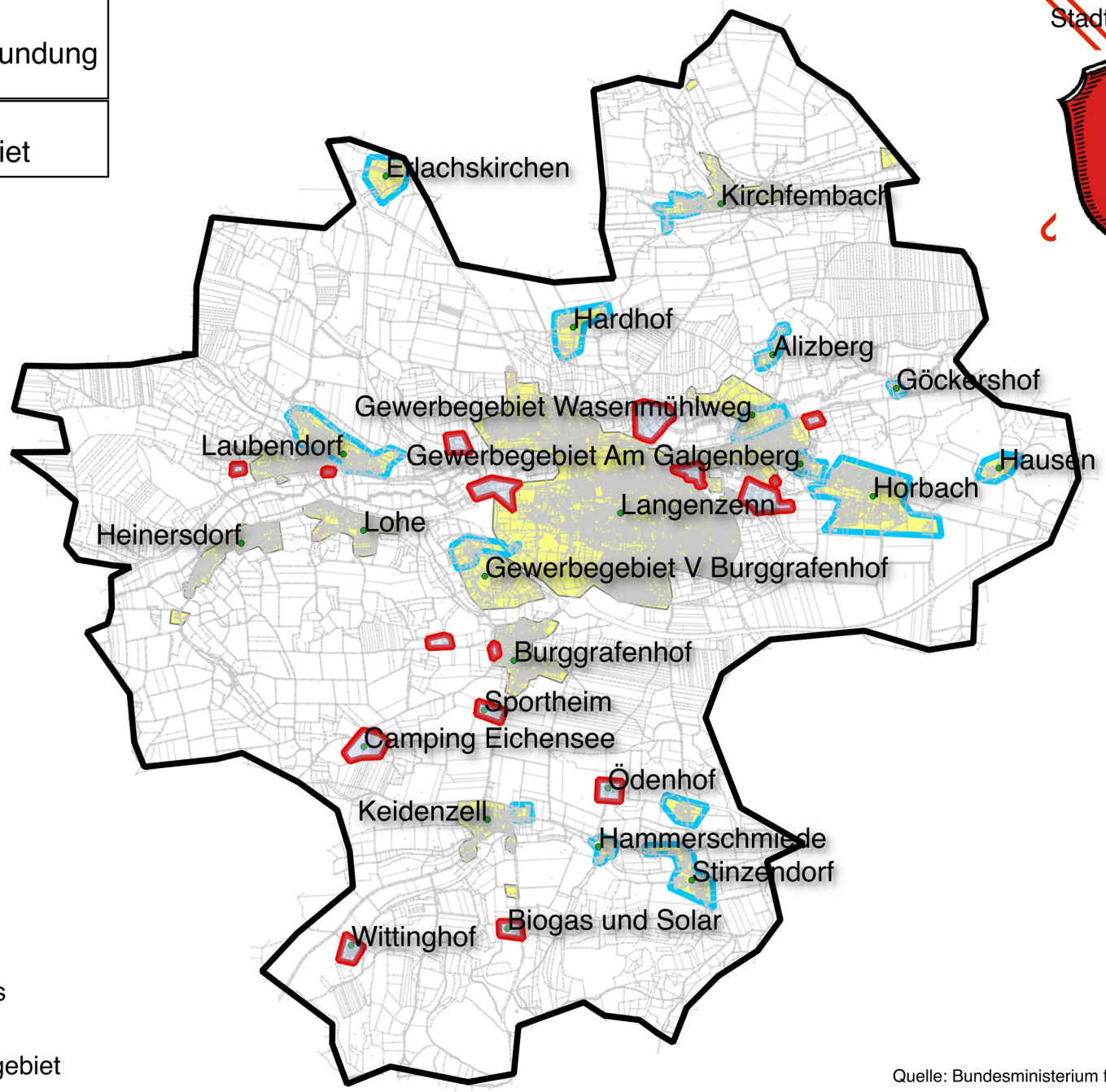
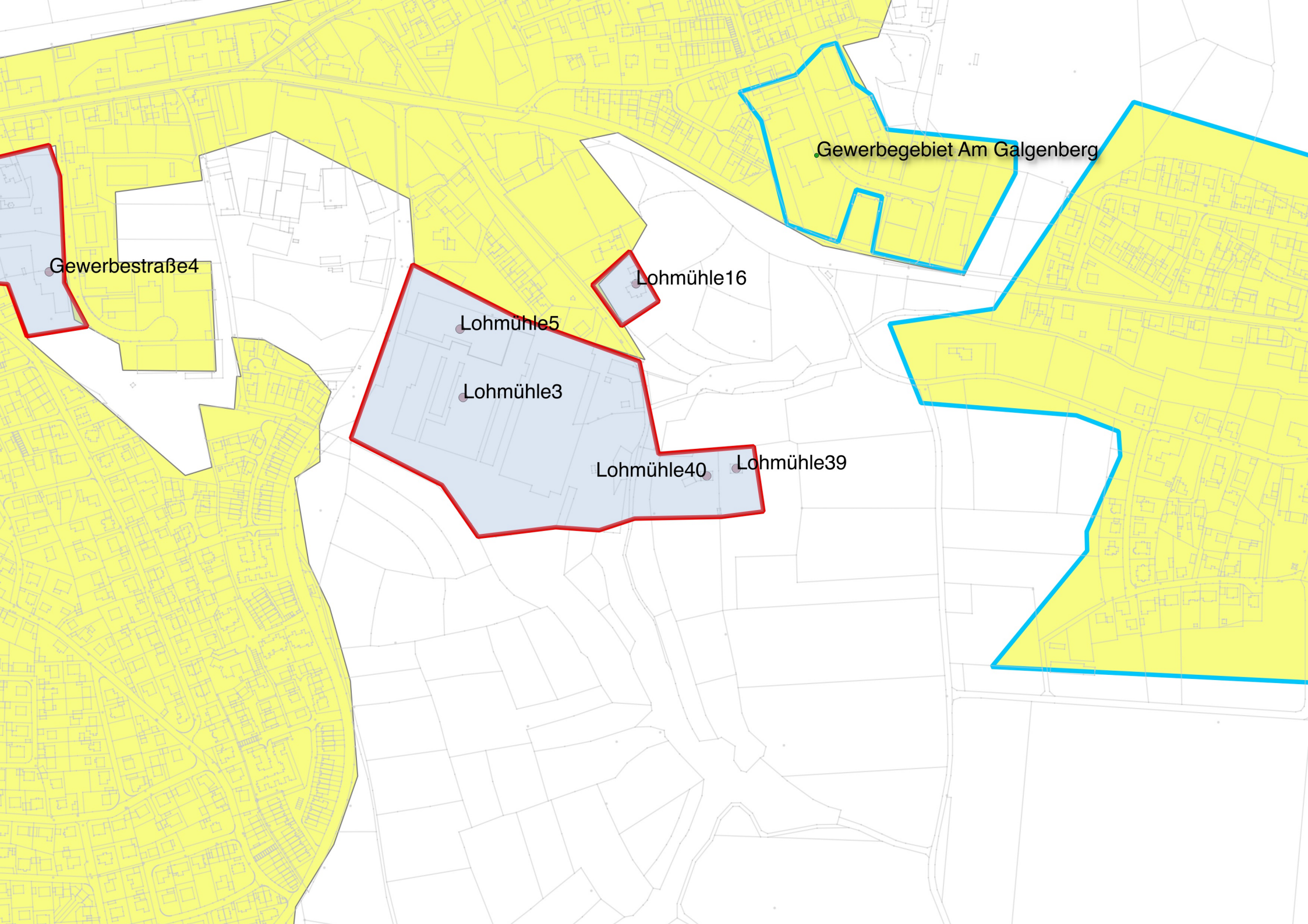


Ist Versorgung Stand vor der Markterkundung
Vorläufiges Erschließungsgebiet



- Legende**
- IST-Versorgung \geq 30 Mbits
 - IST Versorgung $<$ 15 Mbit/s
 - 1.Verfahren_Erschließungsgebiet
 - Vorl. Erschließungsgebiet
 - Gemeindegrenze



Gewerbebestraße4

Lohmühle16

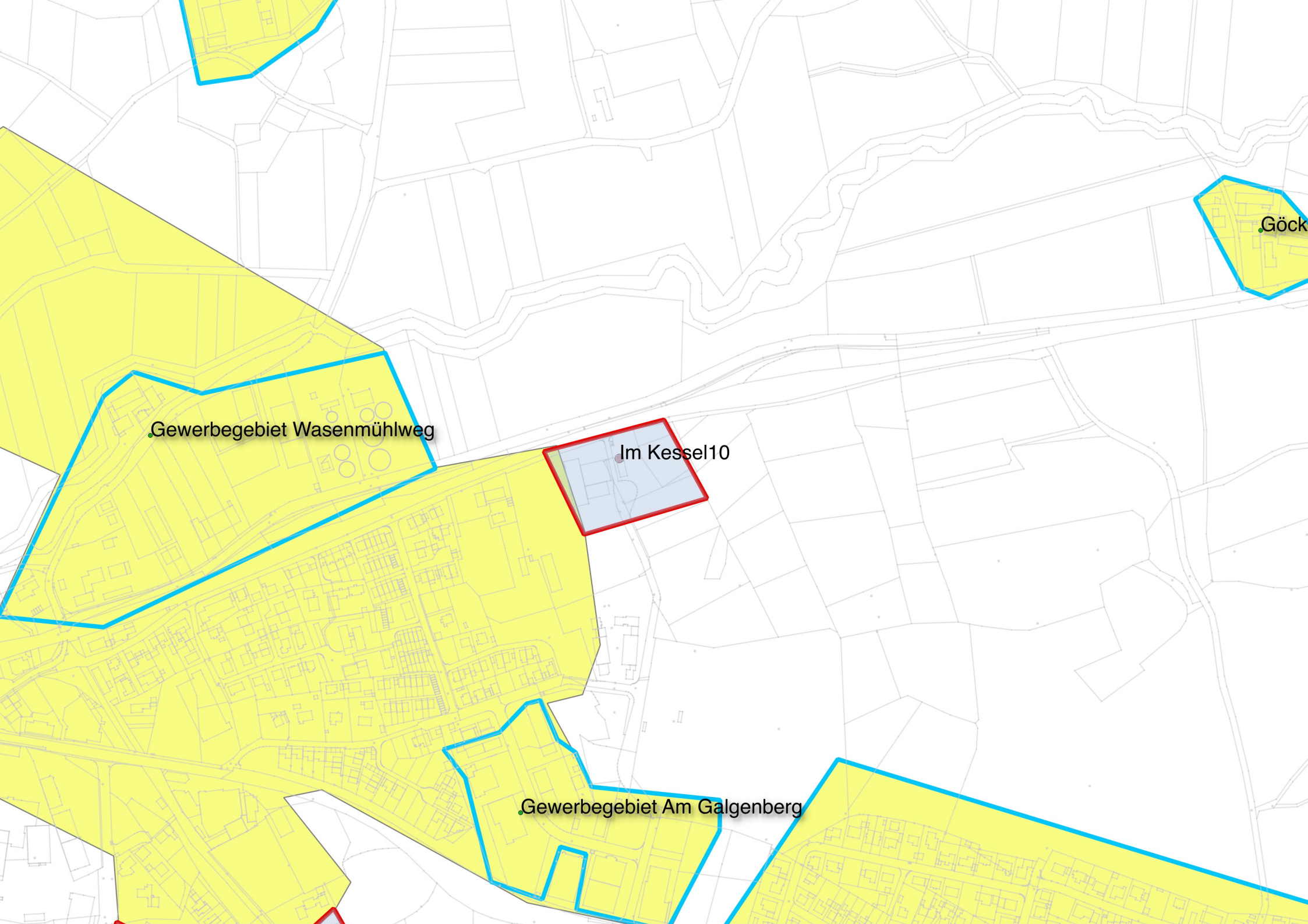
Lohmühle5

Lohmühle3

Lohmühle40

Lohmühle39

Gewerbegebiet Am Galgenberg

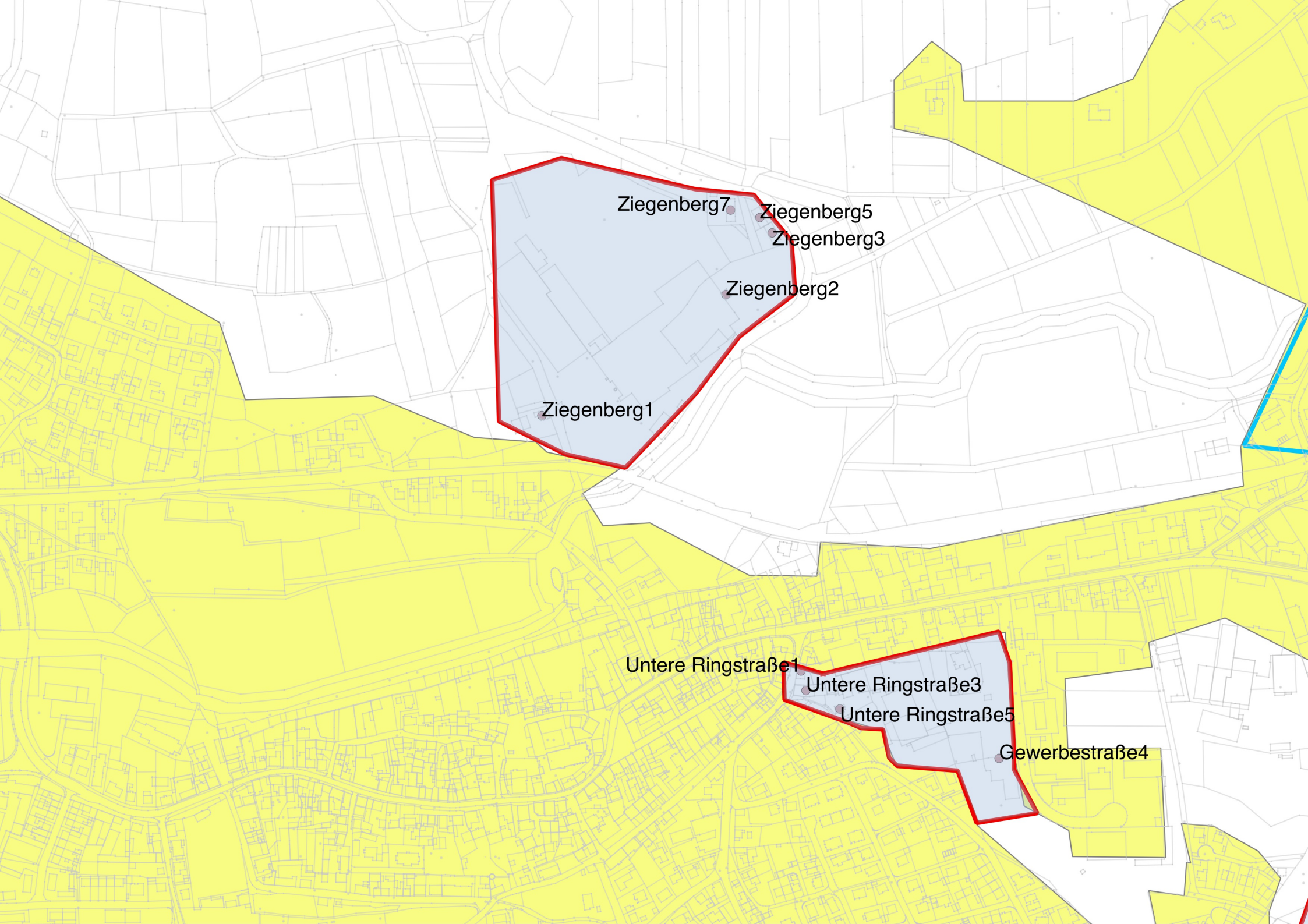


Gewerbegebiet Wasenmühlweg

Im Kessel10

Gewerbegebiet Am Galgenberg

Göck



Ziegenberg7

Ziegenberg5

Ziegenberg3

Ziegenberg2

Ziegenberg1

Untere Ringstraße1

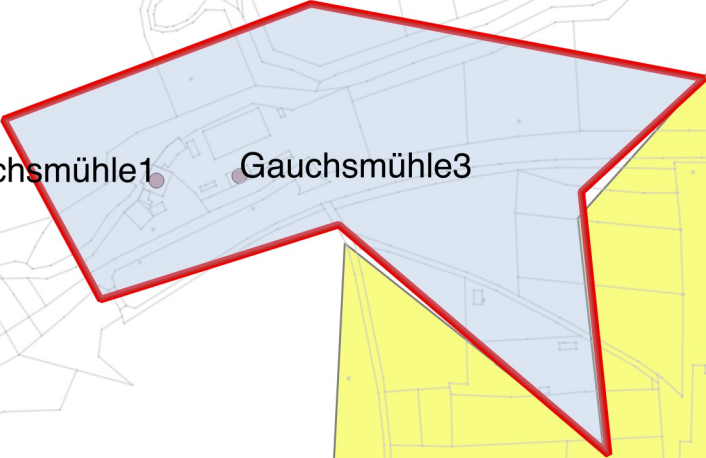
Untere Ringstraße3

Untere Ringstraße5

Gewerbestraße4

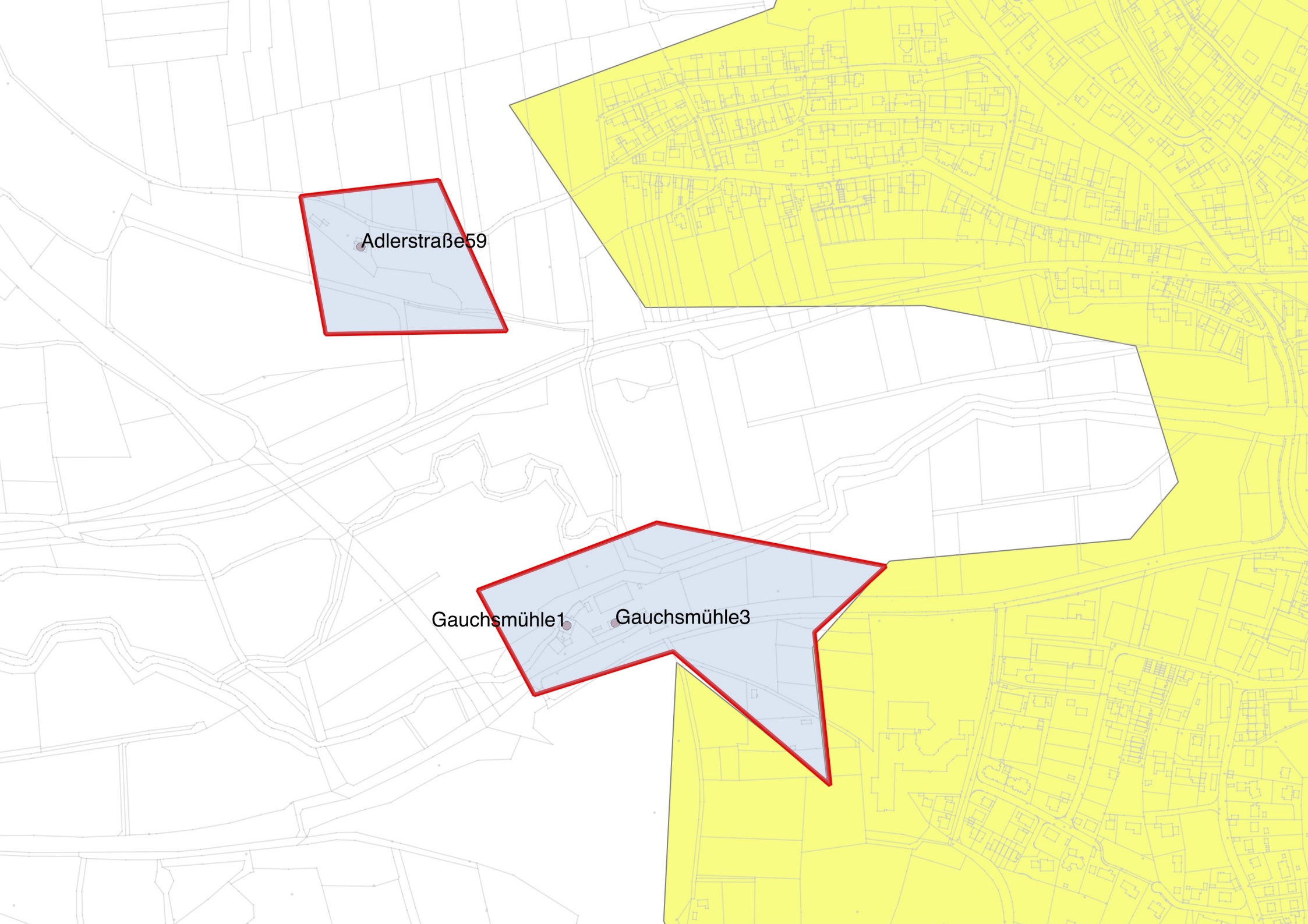


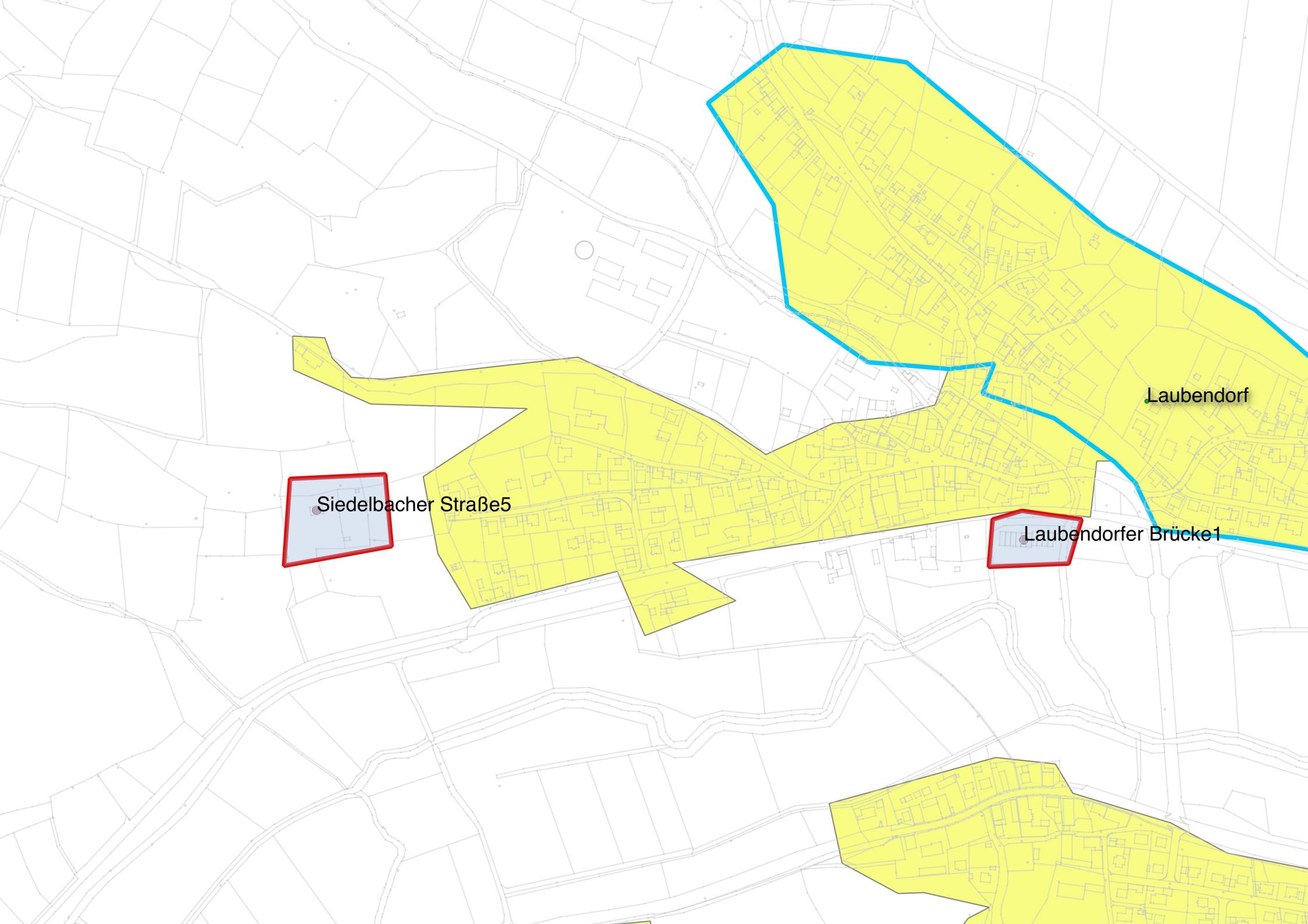
Adlerstraße59



Gauchsmühle1

Gauchsmühle3



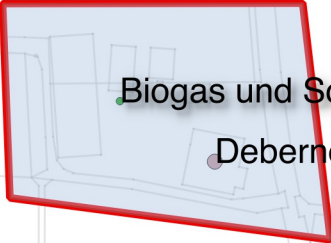
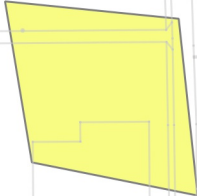


Siedelbacher Straße5



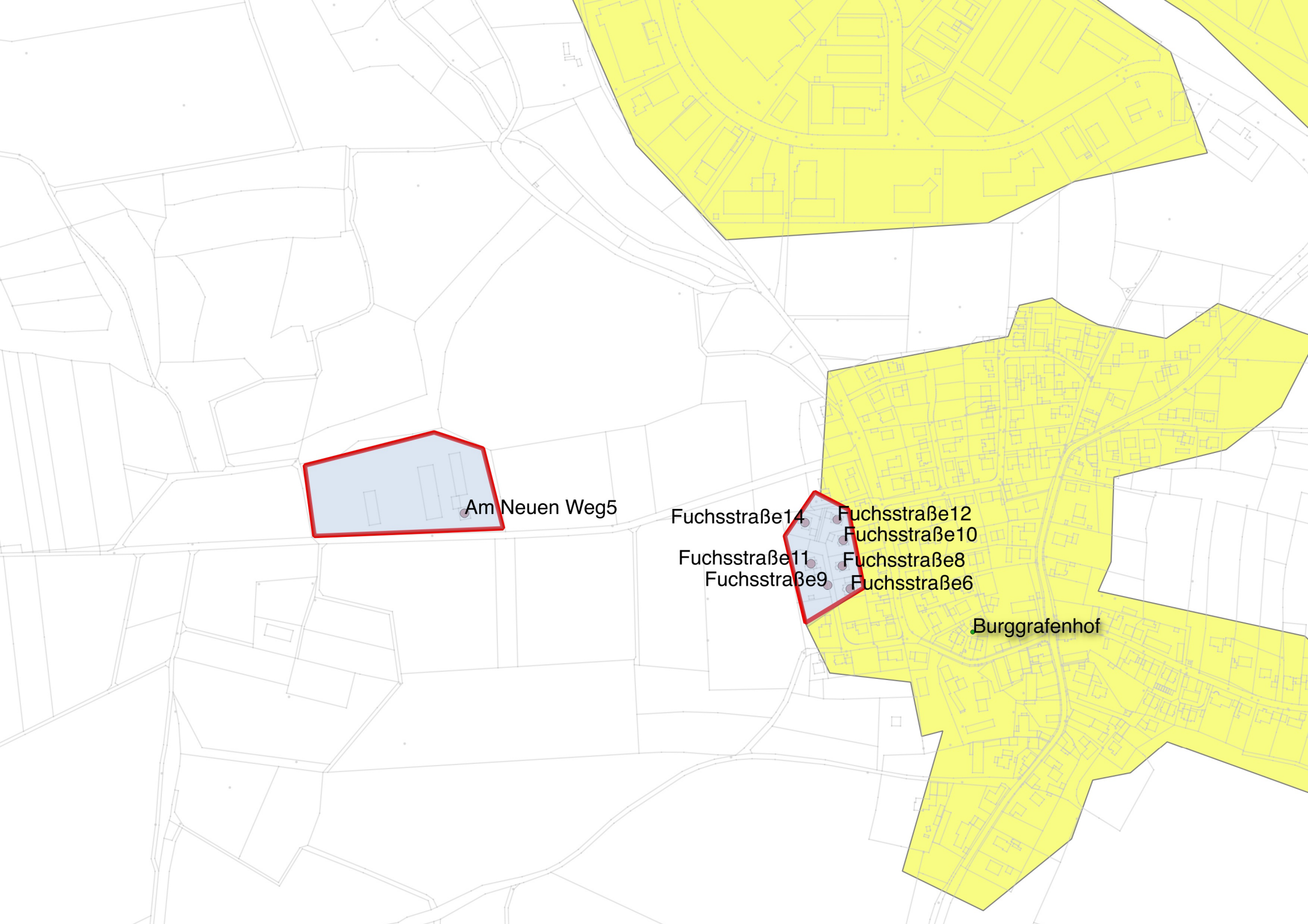
Laubendorfer Brücke1

Laubendorf



Biogas und Solar

Deberndorfer Straße 52



Am Neuen Weg 5

Fuchsstraße 14

Fuchsstraße 12

Fuchsstraße 10

Fuchsstraße 11

Fuchsstraße 8

Fuchsstraße 9

Fuchsstraße 6

Burggrafenhof

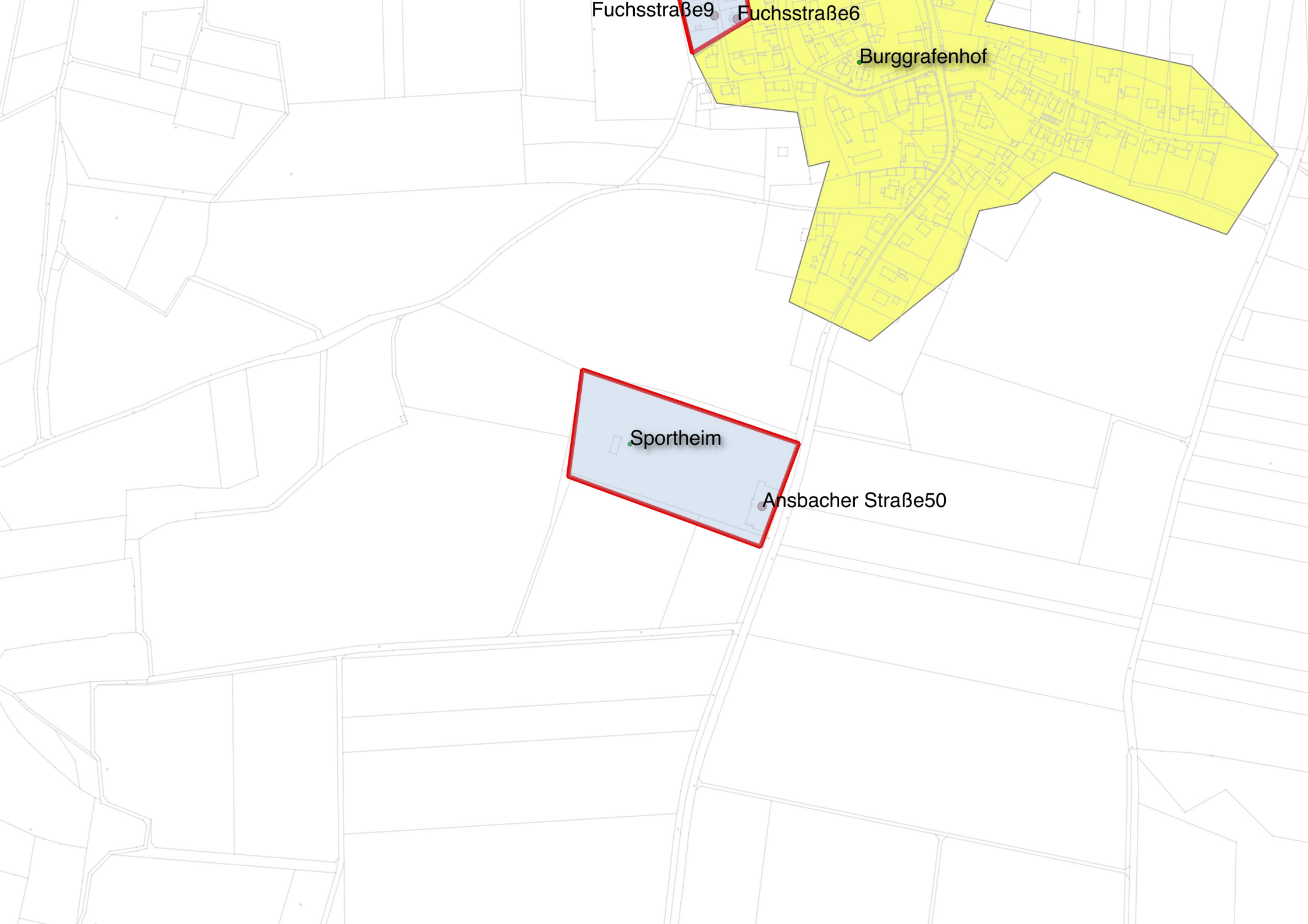
Fuchsstraße9

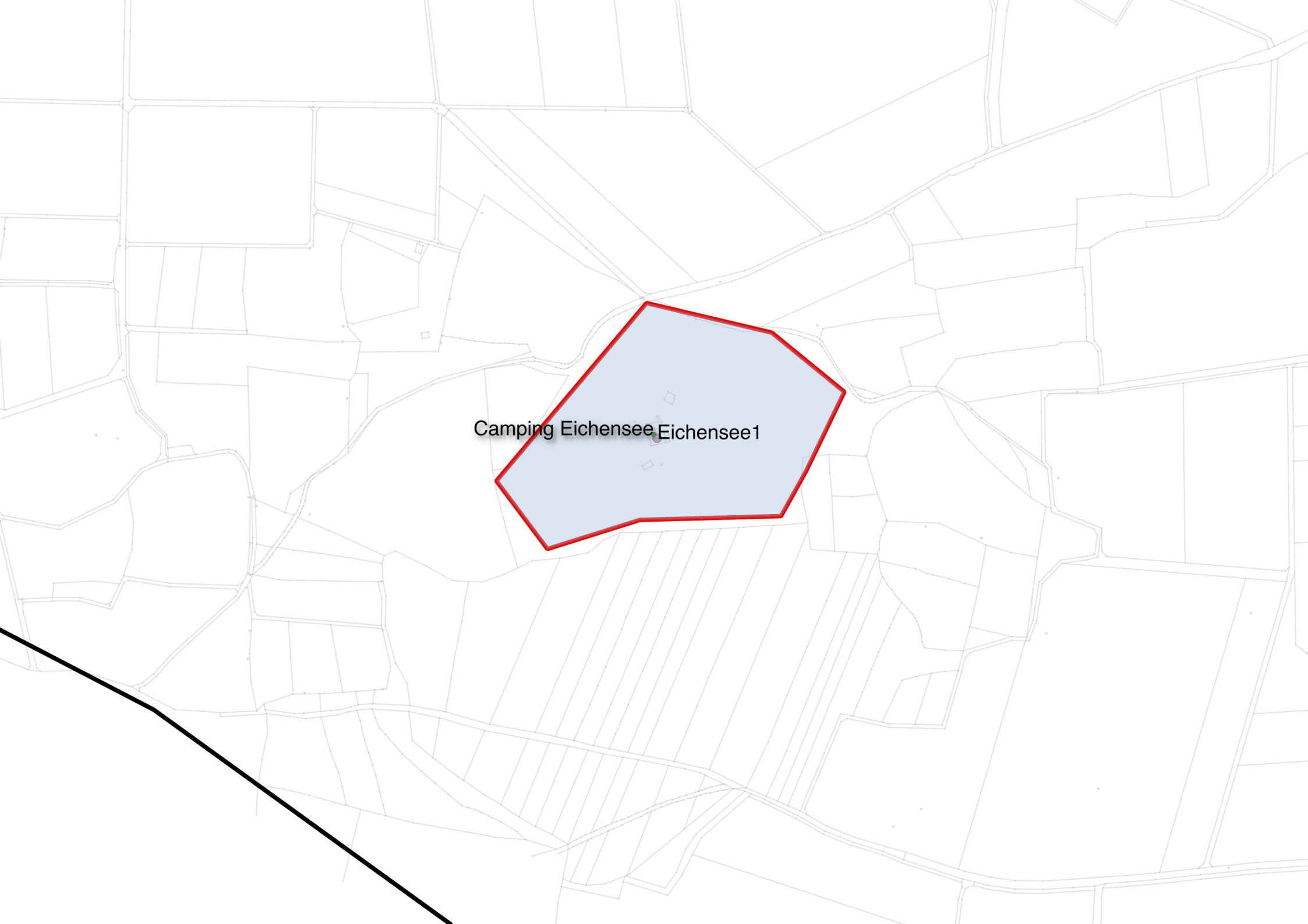
Fuchsstraße6

Burggrafenhof

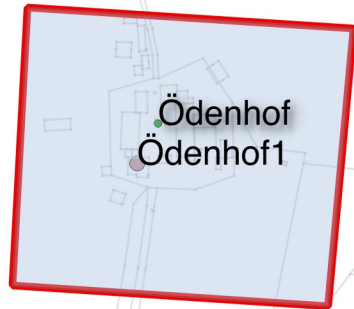
Sportheim

Ansbacher Straße50

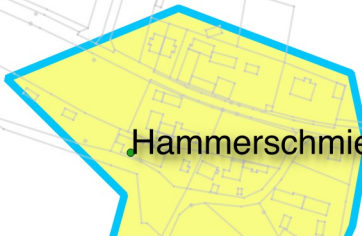
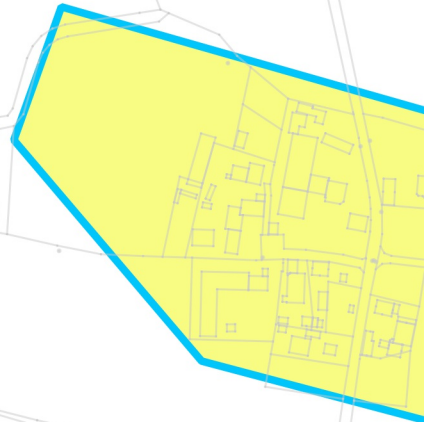
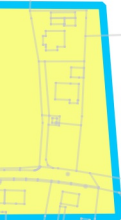


A map showing a network of roads and a central lake. The lake is highlighted with a light blue fill and a red border. The text 'Camping Eichensee Eichensee1' is centered on the lake. There are two small square markers on the lake. A thick black line is visible in the bottom-left corner.

Camping Eichensee Eichensee1

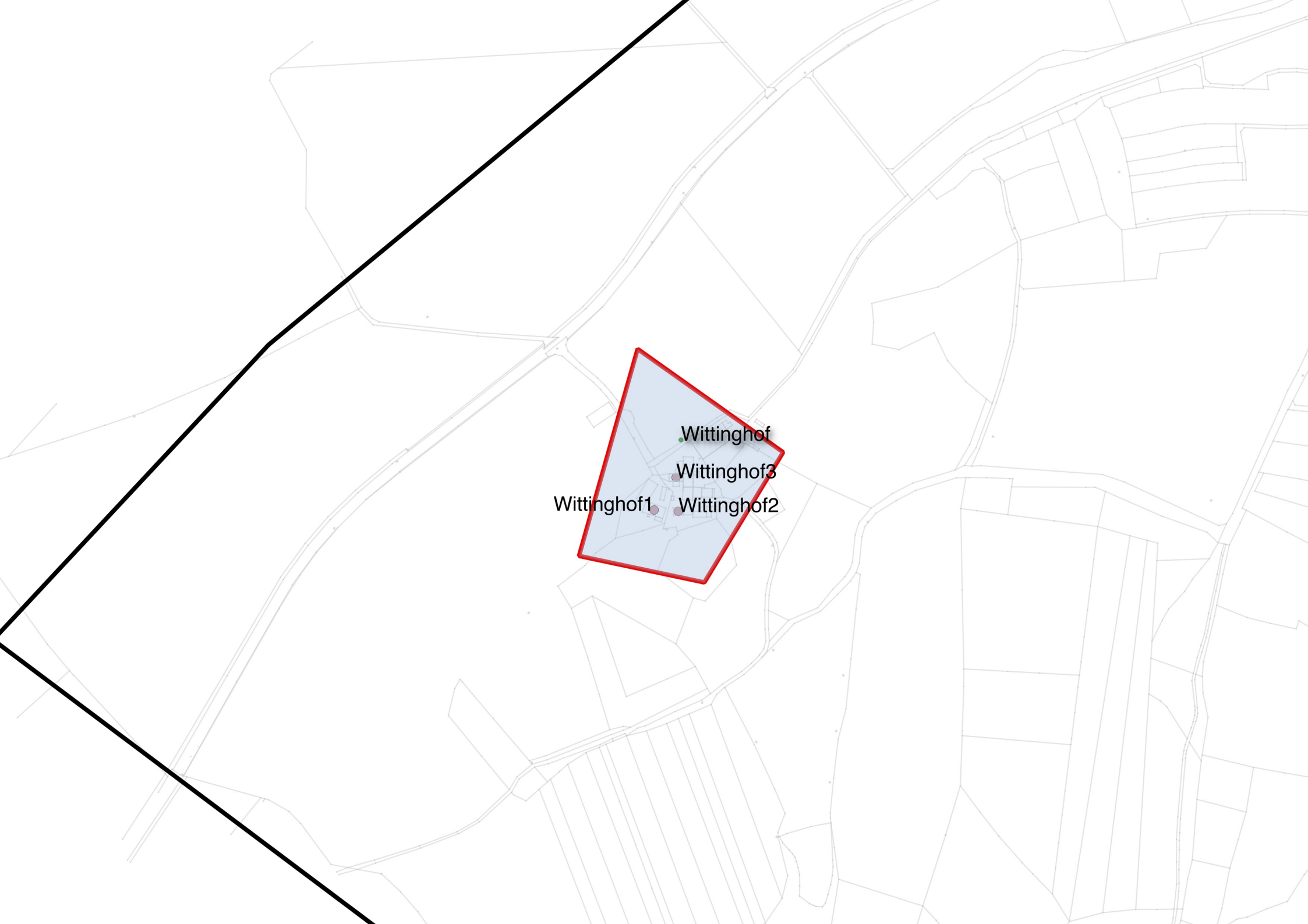


Ödenhof
Ödenhof1



Hammerschmiede





Wittinghof

Wittinghof3

Wittinghof1

Wittinghof2